

1 Clean rails and corresponding roof surface with SIKA Cleaner P.



2 Prime rail and corresponding roof surface. Wait 10 minutes for the primer to dry.



Primer Dry time (can be applied between 5° to 40°)  
Above 15° 10 min  
Below 15° 30 min



**SAFETY GEAR**



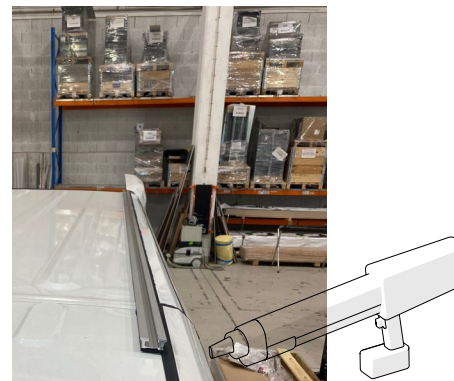
**SAFETY GEAR**



3 Apply the sear on the rails like in the images below. Make a cut out for the vehicle beams.



4 Apply glue (Sikaflex 668) to the first rail and fit it to the section previously primed. Repeat for the second rail.



5 Mount the end caps on the front part of the roof rails.



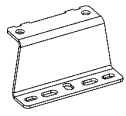
**SAFETY GEAR**



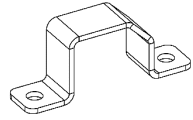
Roof bar kit Maxus e-Deliver, 2 bars



RR73002530



4x 62883



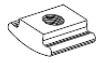
4x R6283



2x 73212



2x RR73000030



8x M8



16x M8x16



8x M8



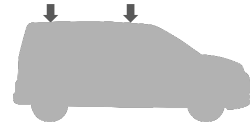
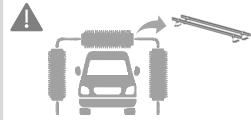
12.5m R66652



2x 37000



= 9 kg



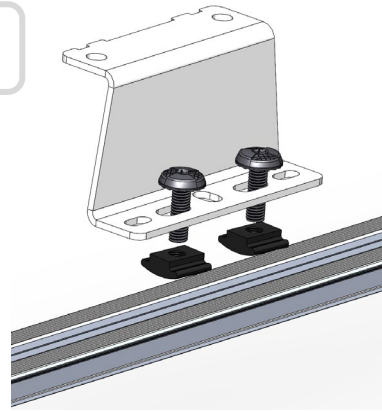
6



M8x16



M8



7



M8x16



M8

