

Racking proposals for
PEUGEOT
Partner, Expert & Boxer



Introduction to Modul-System Limited

Modul-System Limited is a market leader for modular racking systems. The built-in versatility of a modular system means that you can configure a racking solution to meet your own individual requirement, whilst keeping costs down.

For nearly 40 years, we have worked closely with major manufacturers of light commercial vehicles and customers alike. This has helped us find the best solution to suit both the vehicle and the trade. In addition, it has enabled us to continually create new, innovative products. We are committed to developing products of the highest quality and were the first in the industry to introduce racking systems in ultra-high strength steel. This high tech material provides maximum strength and safety with minimum weight, which in turn means lower carbon emissions and fuel costs.

We are a total solution provider, which means we can offer the following resources to our customers:

- Fleet consultation and fleet specification documentation
- Build management and prototype sign off
- Pre delivery inspection
- Onward delivery
- In life maintenance
- A variety of installation options including:
 - Self-assembly
 - Installation at our production facility in Wooburn Green
 - On-site fitting by our national mobile installation teams
 - Nationwide third party installation partners

Through ISO 9001 certification we safeguard quality at every stage of the process, from development, manufacturing and delivery through to sales and customer service. We have also achieved ISO 14001 accreditation to further our commitment to improving the environment.

We are currently converting in the region of 3000 vehicles a year at our production facility.

We are affiliated to a number of organisations such as the SMMT. We are also a partner in the FTA's Van Excellence scheme and we are an approved converter under the VCA's N1 Enhancement scheme.

For further information, quotations or to discuss
your racking requirements please contact us:

Sales Department - 01628 528034 (Option 2)

sales@modul-system.co.uk

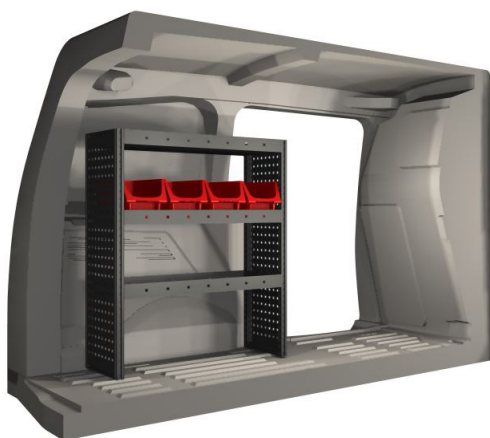


Peugeot

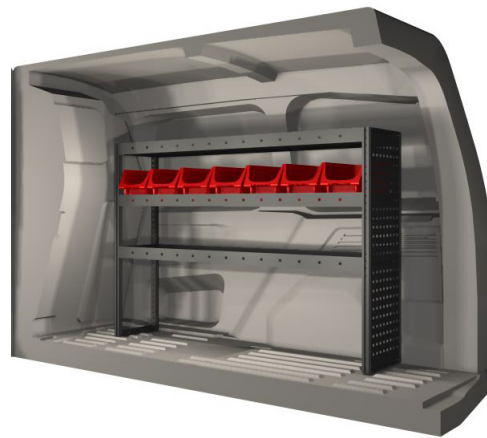
Partner 3.3 m³ (L1) 2019-



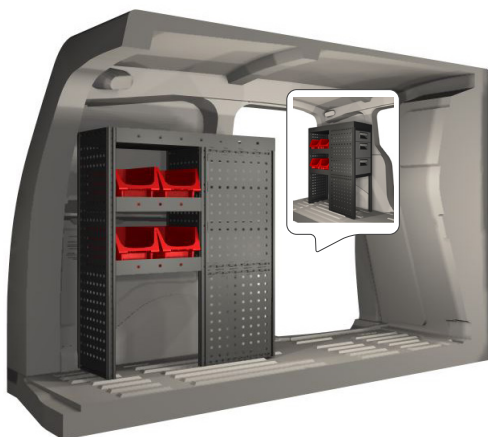
www.modul-system.co.uk



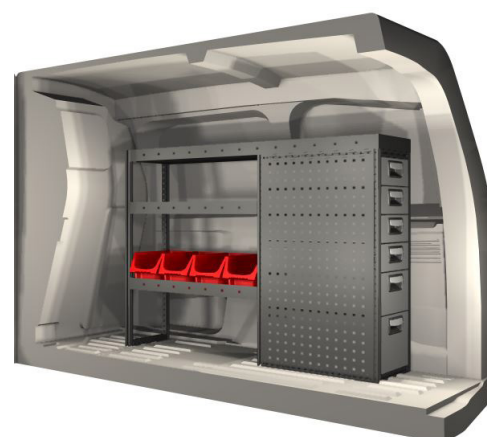
20100068	702 mm	324 mm	918 mm	17.3



20100070	1188 mm	324 mm	918 mm	22.5



20100069	675 mm	324 mm	918 mm	26.1



20100072	1161 mm	324 mm	918 mm	40.8

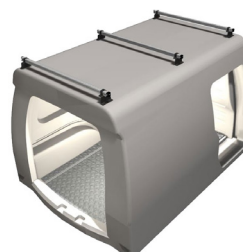


--	--	--	--	--

Floor and lining configuration will vary dependent on vehicle



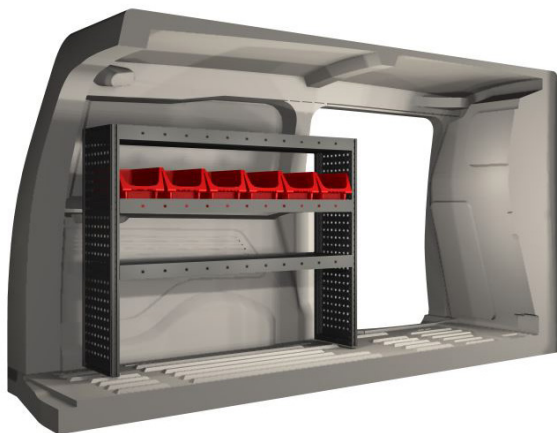
Roof bar kit
Part No: RR020023001



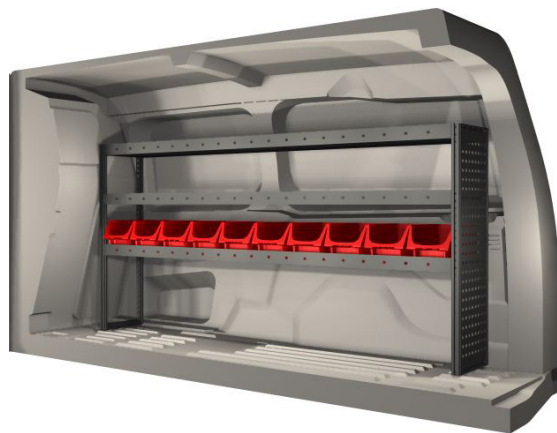
Roof bar kit
Part No: RR020033011

Peugeot

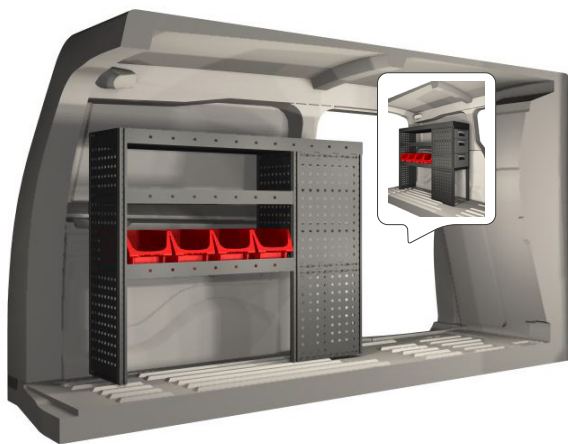
Partner 3.9 m³ (L2) 2019-



20100129	1026 mm	324 mm	918 mm	21.9



20100080	1674 mm	324 mm	918 mm	31.7



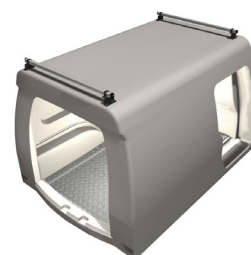
20100130	999 mm	324 mm	918 mm	28.9



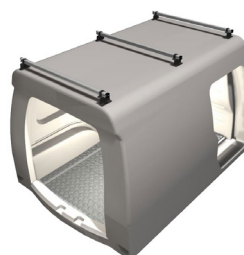
20100398	1647 mm	324 mm	918 mm	46.5



Floor and lining configuration will vary dependent on vehicle				



Roof bar kit
Part No: RR020023001



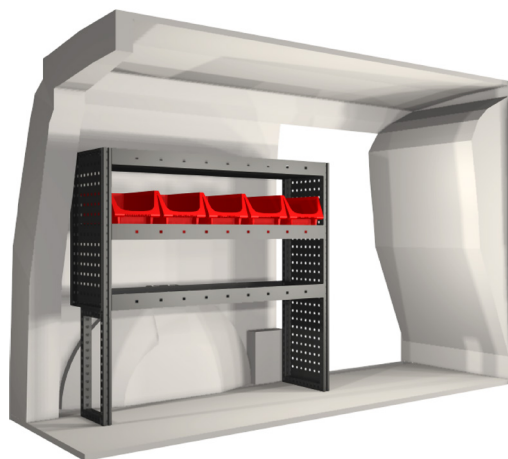
Roof bar kit
Part No: RR020033011

Peugeot

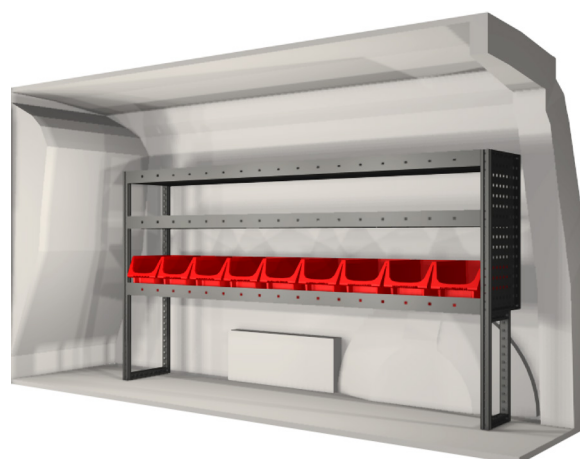
Expert 4.6 m³ (Compact) 2016-



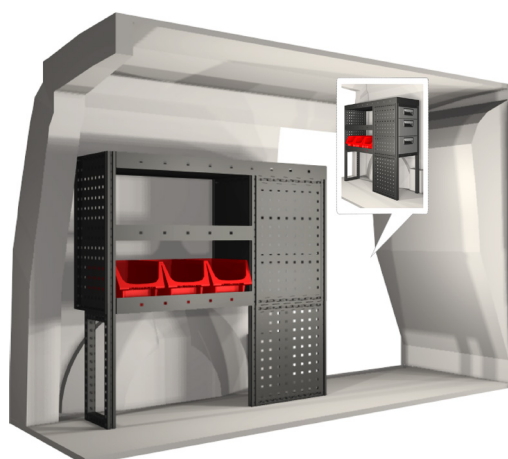
www.modul-system.co.uk



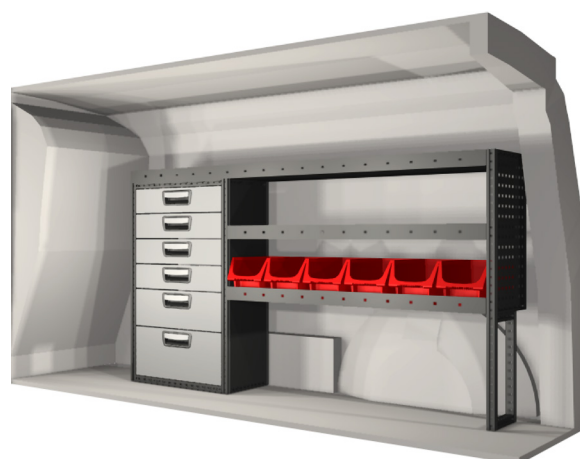
20100437	864 mm	324 mm	918 mm	19.4



20100436	1512 mm	324 mm	918 mm	25.7



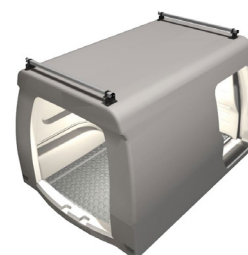
20100439	837 mm	324 mm	918 mm	26.6



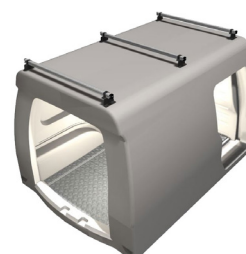
20100440	1485 mm	324 mm	918 mm	42.1



Floor and lining configuration will vary dependent on vehicle				



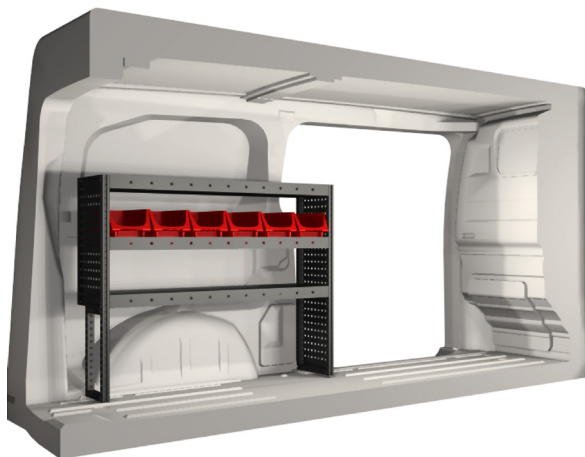
Roof bar kit
Part No: RR030025000



Roof bar kit
Part No: RR030035000

Peugeot

Expert 5.3 m³ (Standard) 2016-



20100442



1026 mm



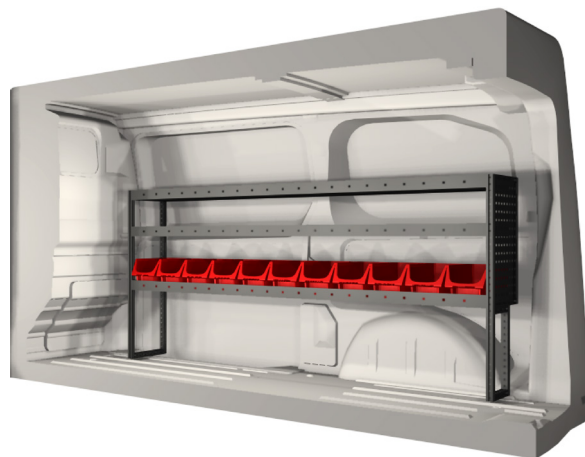
324 mm



918 mm



21.3



20100441



1836 mm



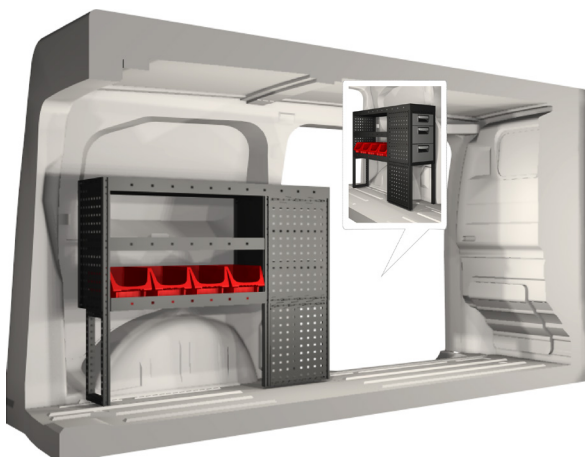
324 mm



918 mm



33.6



20100444



999 mm



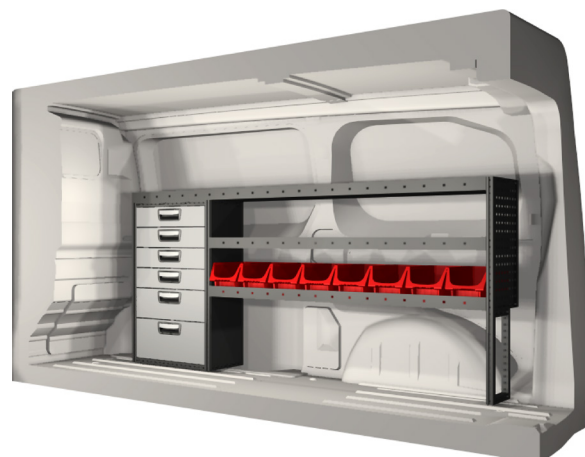
324 mm



918 mm



28.3



20100445



1809 mm



324 mm



918 mm



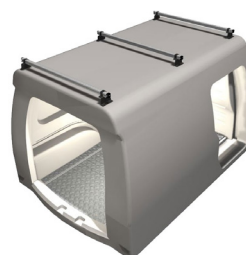
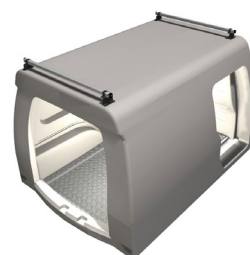
47.3



Floor and lining configuration will vary dependent on vehicle



Roof bar kit
Part No: RR030025000



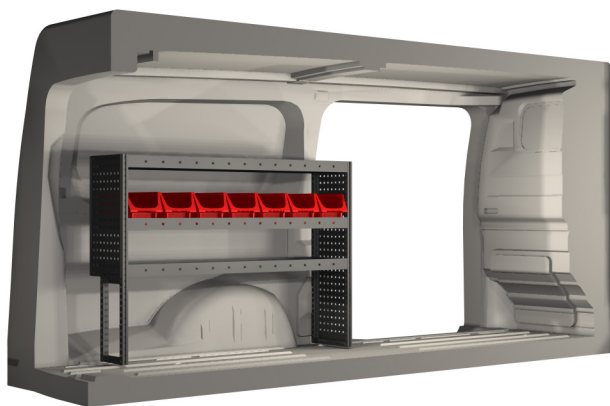
Roof bar kit
Part No: RR030035000

Peugeot

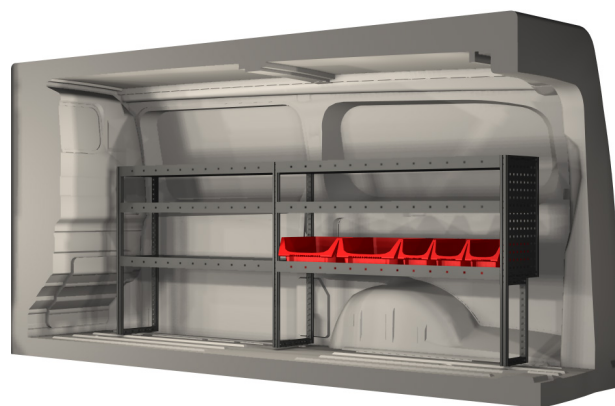
Expert 6.1 m³ (Long) 2016-



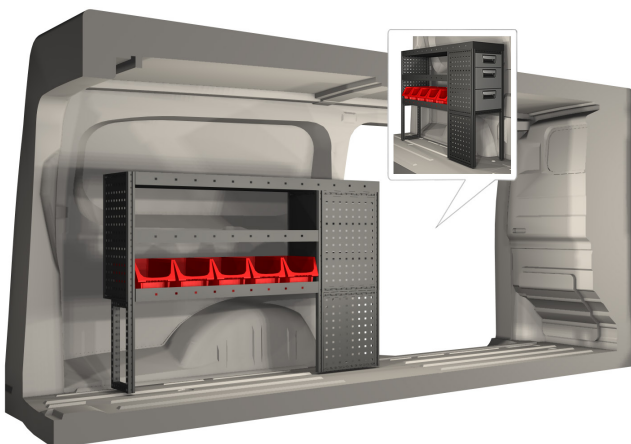
www.modul-system.co.uk



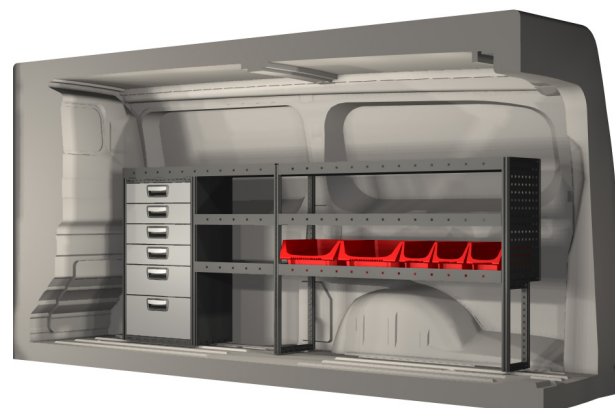
20100088	1188 mm	324 mm	918 mm	23.4



20100446	2187 mm	324 mm	918 mm	32.7



20100449	1161 mm	324 mm	918 mm	30.5

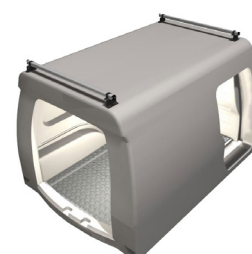


20100448	2187 mm	324 mm	918 mm	49.8

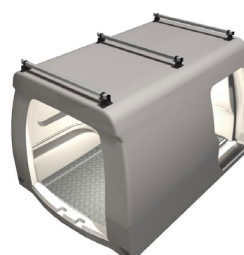


--	--	--	--	--

Floor and lining configuration will vary dependent on vehicle



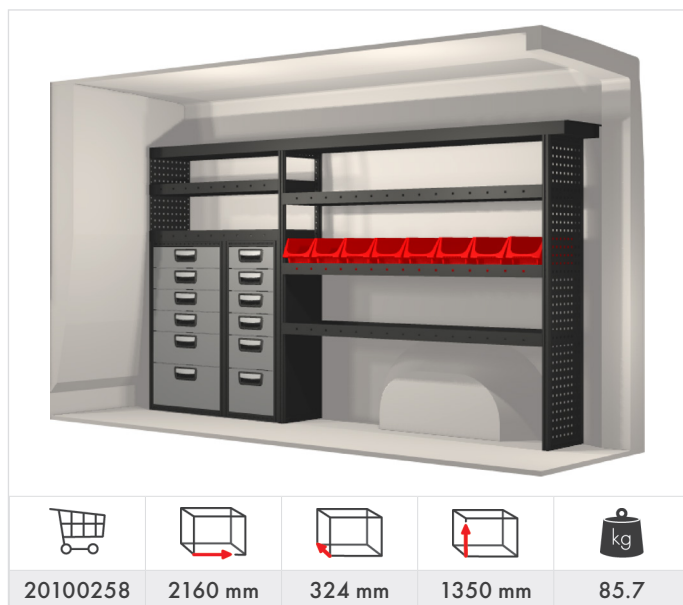
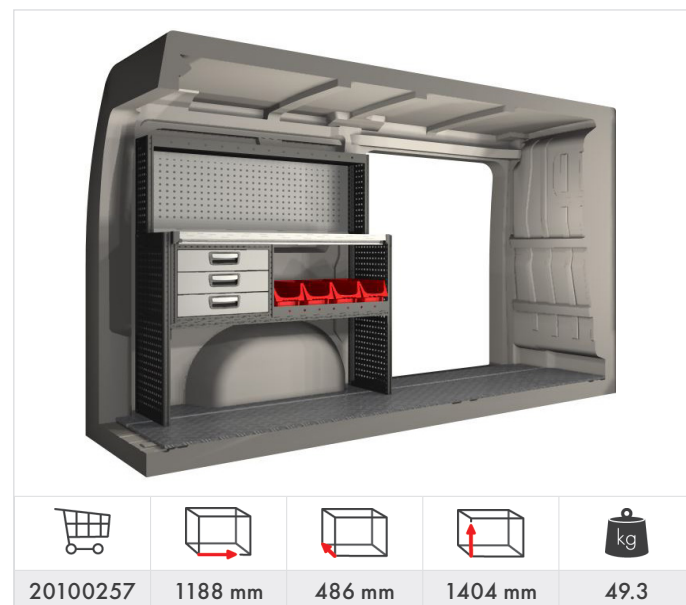
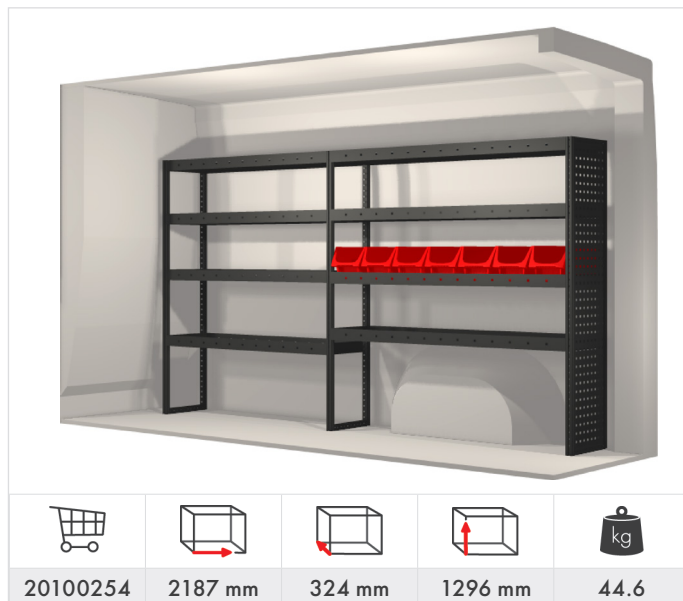
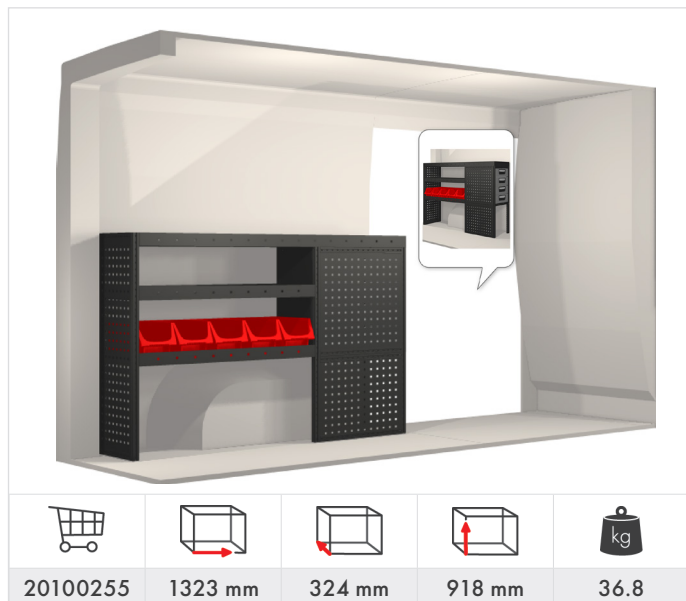
Roof bar kit
Part No: RR030025000



Roof bar kit
Part No: RR030035000

Peugeot

Boxer 8 m³ (L1 H1) 2006-

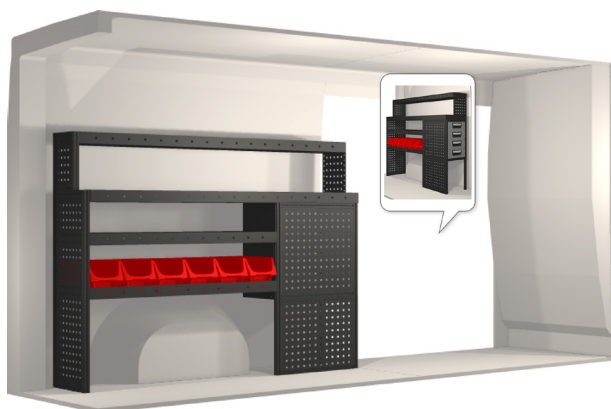


Peugeot

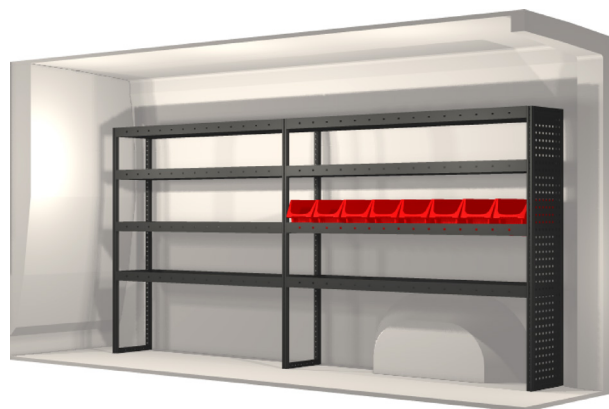
Boxer 10 & 11.5 m³ (L2 H1/H2) 2006-



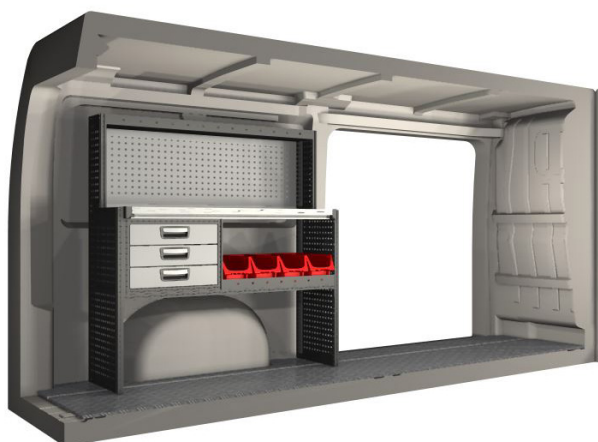
www.modul-system.co.uk



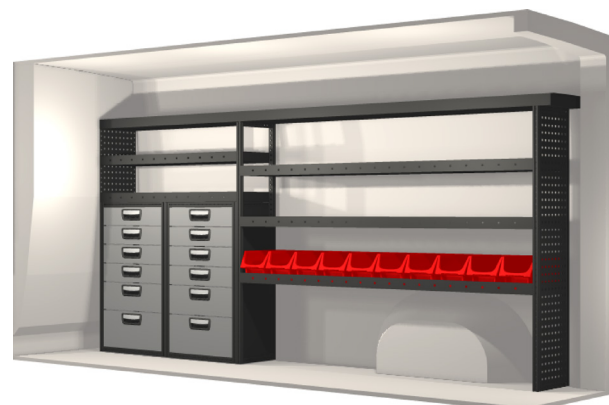
20100260	1485 mm	324 mm	1188 mm	43.4



20100259	2511 mm	324 mm	1296 mm	48.7



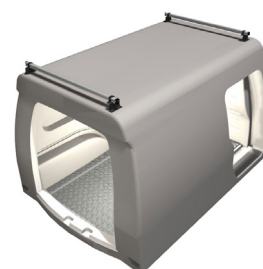
20100262	1188 mm	486 mm	1404 mm	49.3



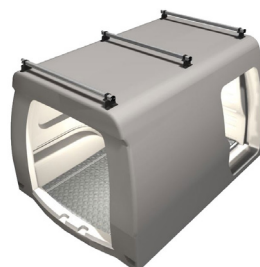
20100263	2646 mm	324 mm	1350 mm	97.1



Floor and lining configuration will vary dependent on vehicle				



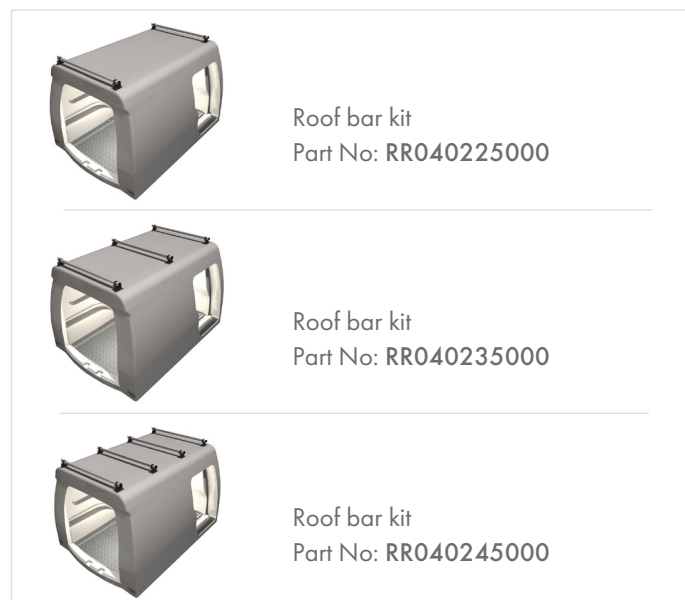
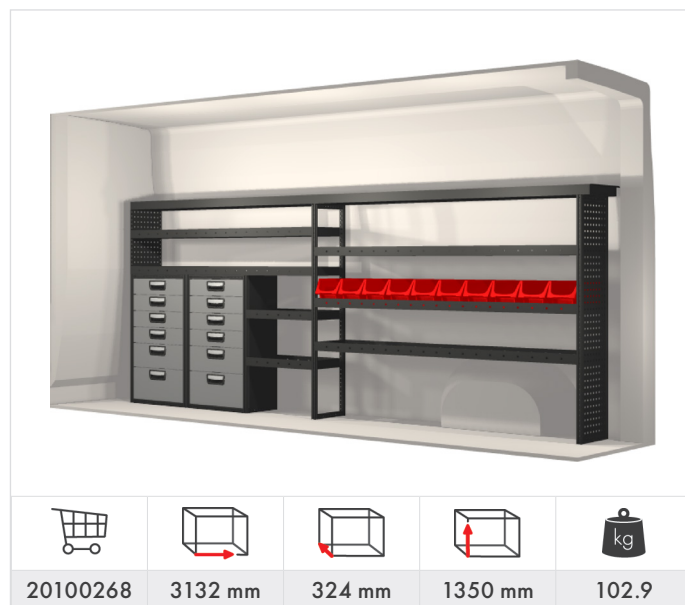
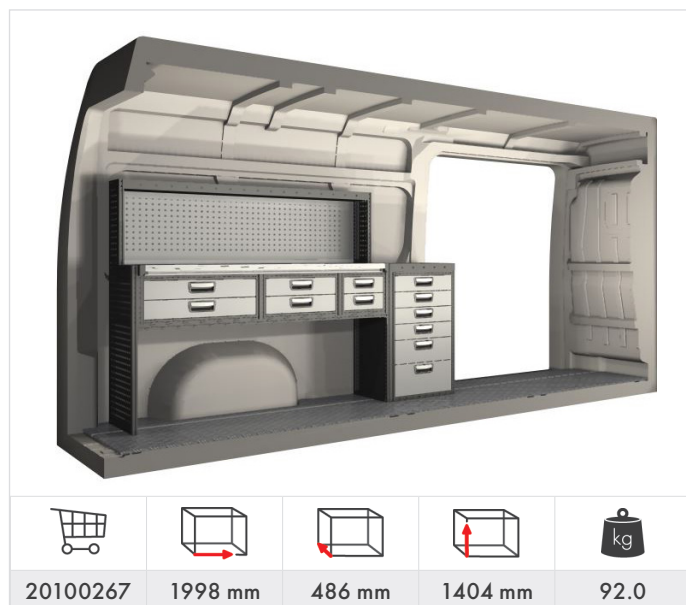
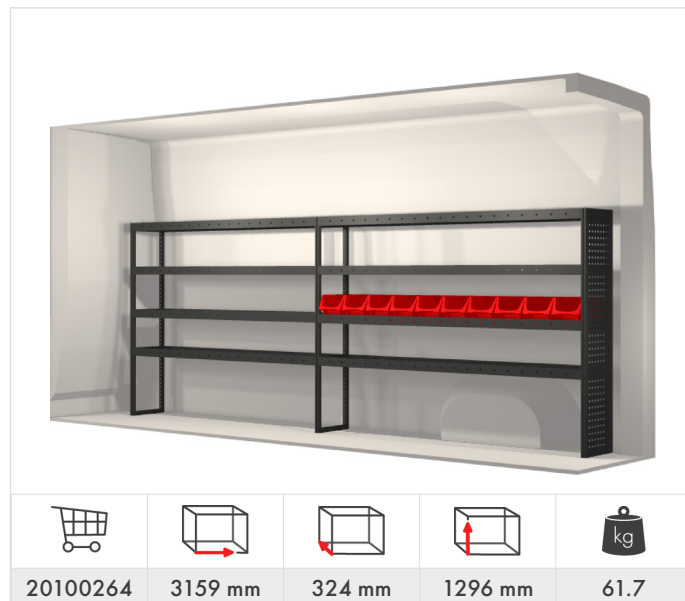
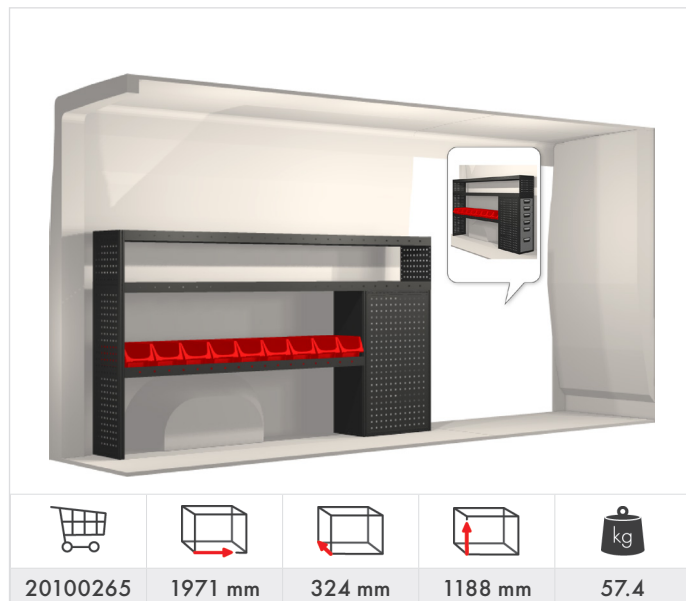
Roof bar kit
Part No: RR040127000



Roof bar kit
Part No: RR040137000

Peugeot

Boxer 13 & 15 m³ (L3 H2/H3) 2006-



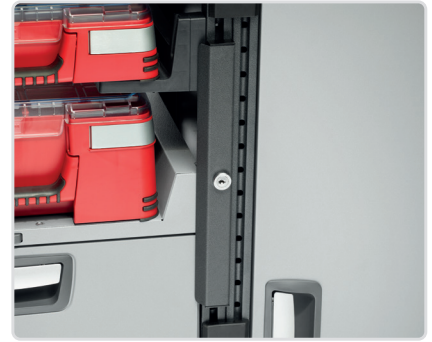
Accessories



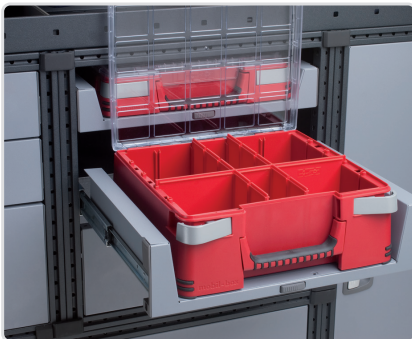
Grab handle
Part No: 50014-03



Load stop
Part No: 50250-03



Modul-Lock
Part No: 50211-03 (cam lock)
Part No: 50212-03 (padlock)



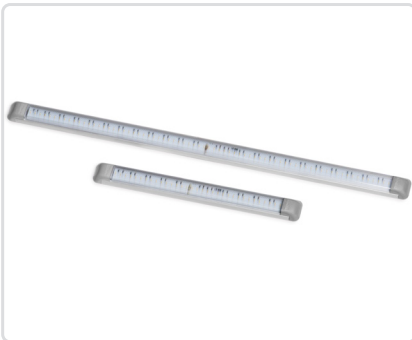
Mobil-Box
Part No: 10566, width 486 mm (low)
Part No: 10563, width 486 mm (high)



Storage holder for Mobil-Box
Part No: 50230-03



Lashing eyelet
Part No: 50025-03



Ambient light
Part. No: 19701-03 - 324 mm
Part. No: 19702-03 - 648 mm



Lashing with narrow strap, 2.0 m (2 pcs)
Part No: 11722



Lashing with ratchet, 4.5 m
Part No: 11716



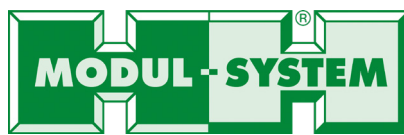
Modul-Box 324 x 324 mm, Part No: 10487-03
Divider, width 324 mm, Part No: 10488-03
Window, width 324 mm, Part No: 10489-03
Handle, width 324 mm, Part No: 10490-03



Modul-Box 162 x 324 mm, Part No: 10480-03
Modul-Box 162 x 486 mm, Part No: 10481-03
Divider, Width 162 mm, Part No: 10482-03
Window, Width 162 mm, Part No: 10483-03



Insert for drawers
For 108 mm high drawer, Part No: 10530-03*
For 108 mm high drawer, Part No: 10533-03**
For 162/216 mm high drawer, Part No: 10535-03***
*162 mm length, 324 mm depth, **324 mm length, 486 mm depth,
***324 mm length, 324 mm depth.



Modul-System Limited

Maddison House

Thomas Road, Wooburn Industrial Park
Wooburn Green, Buckinghamshire. HP10 0PE

01628 528034 (Option 2)

sales@modul-system.co.uk

www.modul-system.co.uk